



**SADC/GIZ PROJECT
“Mhlumeni Goba Community Tourism And Conservation Initiative”**

**SPATIAL PLANNING AND INITIAL ACCESS AND
CONSTRUCTION ACTIVITIES PRESENTATION**



16/05/2014, MAGADZAVANE LODGE



1. PLANNING AND GOVERNANCE

2. DESIGN, CONSTRUCTION AND REHABILITATION OF LODGE INFRASTRUCTURE

3. TRAIL DEVELOPMENT

**4. TRAINING IN BASIC HOSPITALITY RELATED FIELD FOR ECOTOURISM, INCLUDING
GUIDING**

5. MARKETING AND PRODUCT DEVELOPMENT

6. INTERNATIONAL FACILITATION

7. PROJECT MANAGEMENT

MAIN PROJECT ACTIVITIES

giz

1. PLANNING and GOVERNANCE

SUB-ACTIVITIES 2014



Q1: JANUARY – MARCH 2014

- Establish Mhlumeni - Goba Cross Border NRM forum
- Spatial planning of ecosystem services and functions
- Other Stakeholder Development Activities

Q2: APRIL – JUNE 2014

- Socio-Economic Baseline
- NRM status and activities baseline
- Governance analysis
- Main recreational values
- Cross Border Forum Meeting

Q3: JULY – SEPTEMBER 2014

Incorporate market analysis into business plan

Q4: OCTOBER – DECEMBER 2014

- Draft Eco Business Plan with proposed Sustainable livelihood activities
- Cross Border Forum Meeting

1. PLANNING and GOVERNANCE

SUB-ACTIVITIES 2014



SPATIAL PLANNING STEPS

a. PRELIMINARY ACTIVITIES	Jan	Febr	March	April	May	June
b. STAKEHOLDER ENGAGEMENT AND INVOLVEMENT	Jan	Febr	March	April	May	June
c. COMMUNITY PARTICIPATORY MAPPING	Jan	Febr	March	April	May	June
d. TECHNICAL ACTIVITIES	Jan	Febr	March	April	May	June

TIME SCHEDULE

- January – February

OBJECTIVES AND ACTIVITIES

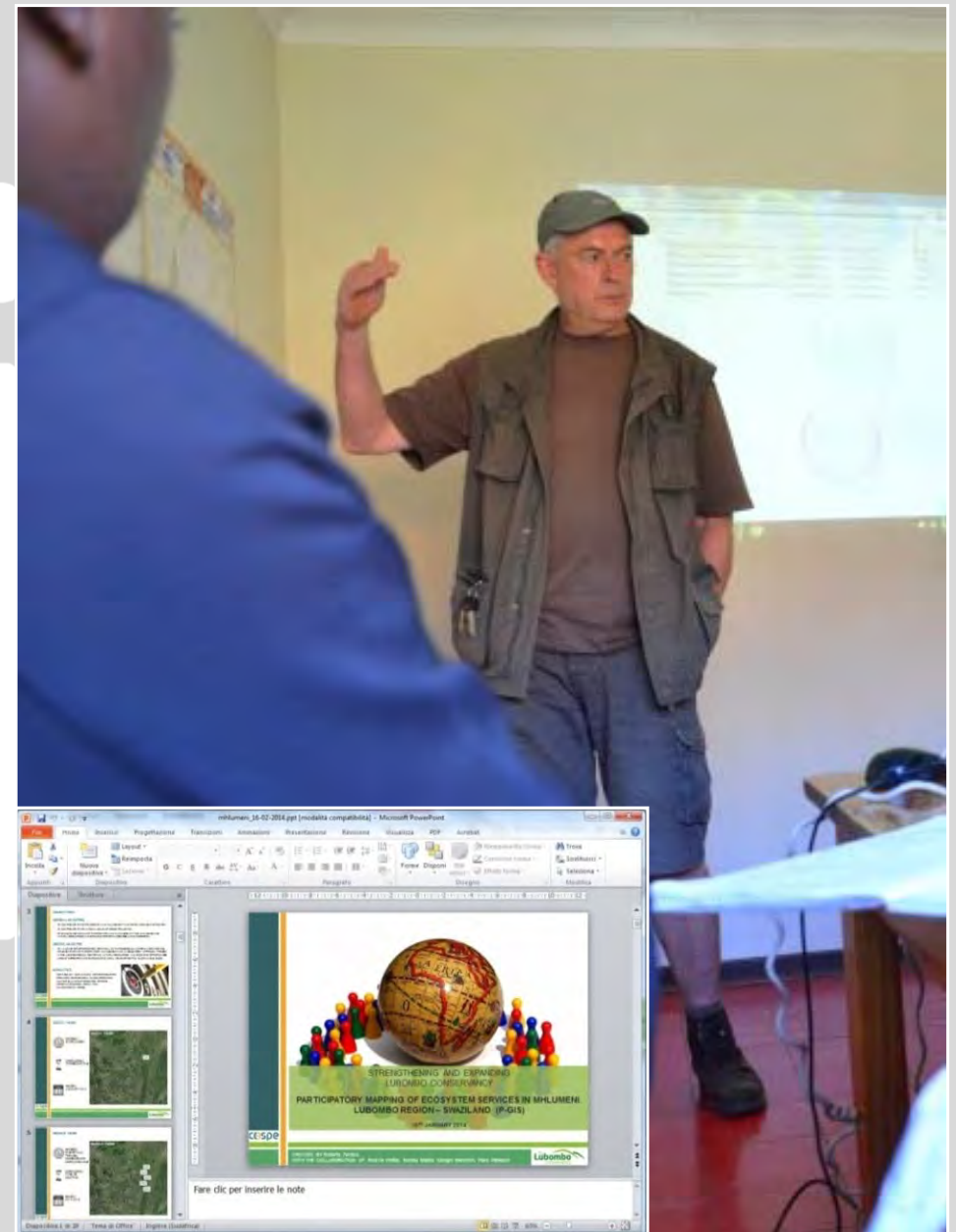
- To define the methodology, stakeholders, activities and time schedule
- To define the survey forms, questionnaires, work tools
- To purchase materials
- To train and conform the staff about appropriate survey procedure

ACTORS

- Lubombo Conservancy
- COSPE
- SNTC
- TFCA
- Community focal persons

MAIN OUTPUTS

- Project activities framework
- Presentations
- Field forms
- Questionnaires
- Documents collection



A. PRELIMINARY ACTIVITIES

TIME SCHEDULE

- January – February

OBJECTIVES AND ACTIVITIES

- To share the process methodology and the strategic choices and to get/analyze data , with some institutions and the partners, during the whole duration of the spatial planning process

ACTORS

- Lubombo Conservancy
- COSPE
- SNTC
- TFCA
- Community focal persons
- Surveyor General,
- Mlawula Nature Reserve,
- CESVI,
- The Dutch government
- Swazi Trails,
- All Out
- ...

MAIN OUTPUTS

- Shared methodology and strategic choices
- Meetings, mails, calls, presentations
- documents and data collection



TIME SCHEDULE

- March 27th, Mhlumeni Care point

OBJECTIVES AND ACTIVITIES

- To introduce the project partners, stakeholders, staff
- To describe the project and the Eco Lubombo Program
- To explain and share the Spatial planning process
- To share Key-informants criteria
- To identify the Key- informant and the local moderators

ACTORS

- n. 1 Lubombo Conservancy representative
- n. 1 COSPE representative
- n. 1 Mlawula Nature Reserve – SNTC representative
- about 80 Mhlumeni residents (only 53 signed in the attendance sheet)

MAIN OUTPUTS

- 80 informed and sensitized community persons
- 30 selected key-informants
- 4 selected local moderators



SELECTION CRITERIA and RESULTS

- PROVENANCE: REPRESENTATION OF DIFFERENT PARTS OF THE COMMUNITY
 - Machibini 10 persons
 - Mbange 7 persons
 - Timpheini 12 persons
 - Mhlumeni 4 persons
- GENDER: BALANCED NUMBER OF WOMEN AND MAN
 - Female 17 persons
 - Male 16 persons
- YOUTH AND STUDENTS: AT LEAST 5
 - 18 - 35 11 persons
 - 35 + 22 persons
- REPRESENTATION OF ORGANIZED GROUPS: ONE FOR ASSOCIATION / GROUP
 - Cattle farmers 1 persons
 - Youth 5 persons
 - Farmers 2 persons
 - Traditional healers and harvesters 6 persons
 - Water committee 2 persons
 - Handcraft 2 persons
 - Inner council 4 persons
 - Support group 3 persons
 - Mhlumeni Trust 4 persons
 - Women group 4 persons

TIME SCHEDULE

- April 9th , COSPE office in Siteki

OBJECTIVES AND ACTIVITIES

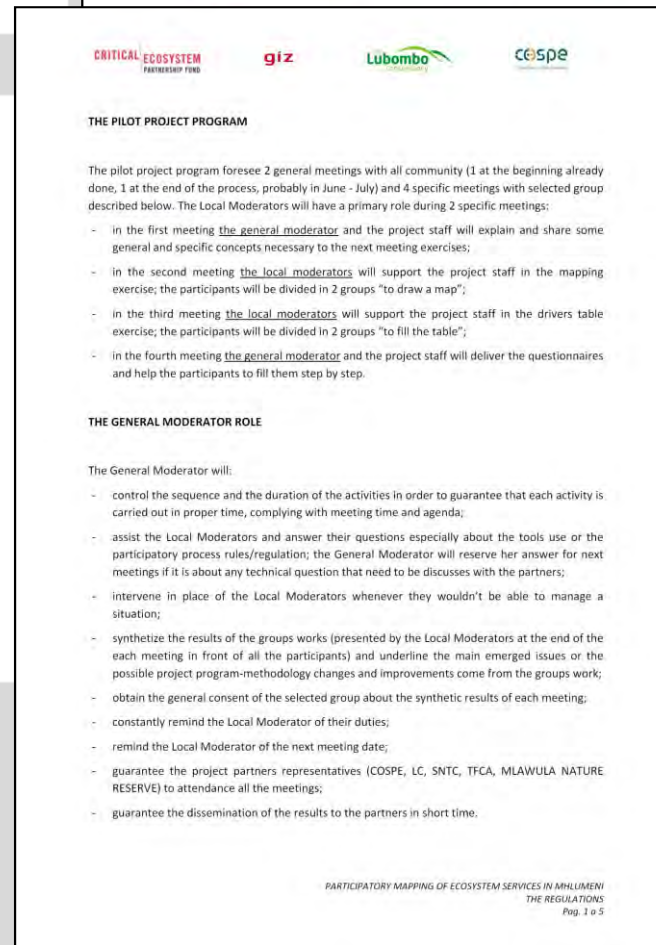
- To define and share the process rules and roles
- To familiarize with the work tools
- To highlight problems and opportunities came from the first meetings
- To collect suggestions
- To plan next activities

ACTORS

- n. 1 Lubombo Conservancy representative
- n. 1 COSPE representative
- n. 4 local moderators

MAIN OUTPUTS

- Shared regulations
- Improved activities and work tools



TIME SCHEDULE

- May 6th, Mhlumeni Care point

OBJECTIVES AND ACTIVITIES

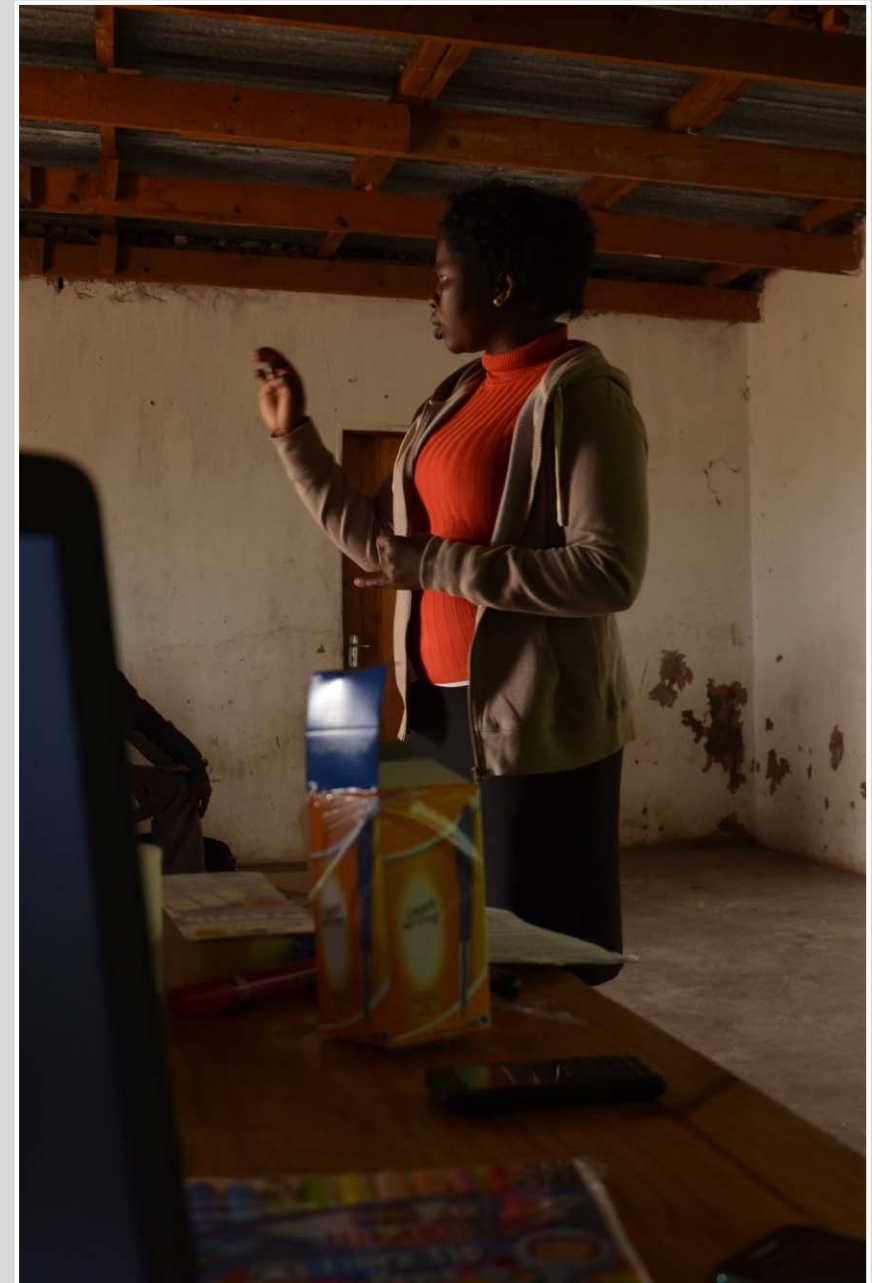
- To explain and train the Pilot project key-concepts and activities
- To identify the main Ecosystem Services in Mhlumeni
- To share Land Cover/Land Use Classes
- To make a first mapping exercise

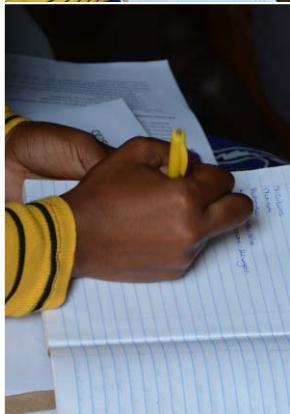
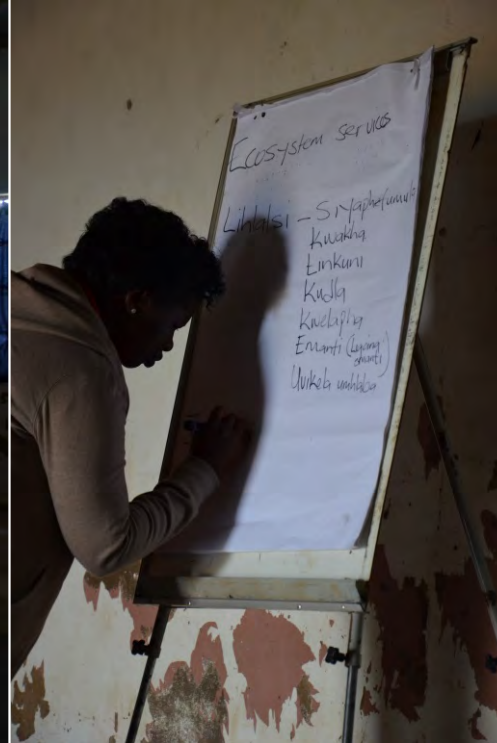
ACTORS

- n. 1 Lubombo Conservancy representative
- n. 1 COSPE representative
- n. 1 Mlawula Nature Reserve – SNTC representative
- n. 2 Southern Africa Wildlife College Students
- n. 21 key-informants

MAIN OUTPUTS

- 21 key-informants learned about ecosystem key-concepts and process activities
- List of the main Ecosystem Services in Mhlumeni
- List of the main Land Cover/Land Use Classes in Mhlumeni





Landcover	Land use
*EMHLATSI	- Sa Kha Tindlu - Tinkhuwi - UMUTSI (KwELAPHO) - ITISELO / NENYAMA - TINYOSI
*EMASIMINI	*UMBILA *Emabele *Indluba *Mngomeni *Bhatata *Umnyambeka
*EMANTI	Δ ITISHI Δ Emanzi ekumakha Δ Ingwenya Δ LUKHWALE
*TAKHIWO	* ITOLO * TI KOLWA * Emanziyo * Enakhala





TIME SCHEDULE

- May 7th, COSPE office in Siteki

OBJECTIVES AND ACTIVITIES

- To remind roles and rules
- To share new issues to be explain with a additional meeting
- To simulate the mapping exercise
- To engage 4 more key-informants

ACTORS

- n. 1 Lubombo Conservancy representative
- n. 1 COSPE representative
- n. 3 local moderators

MAIN OUTPUTS

- Trained local moderator about mapping exercise
- List of new issues to be explain with a additional meeting



TIME SCHEDULE

- May 13th, Mhlumeni Care point

OBJECTIVES AND ACTIVITIES

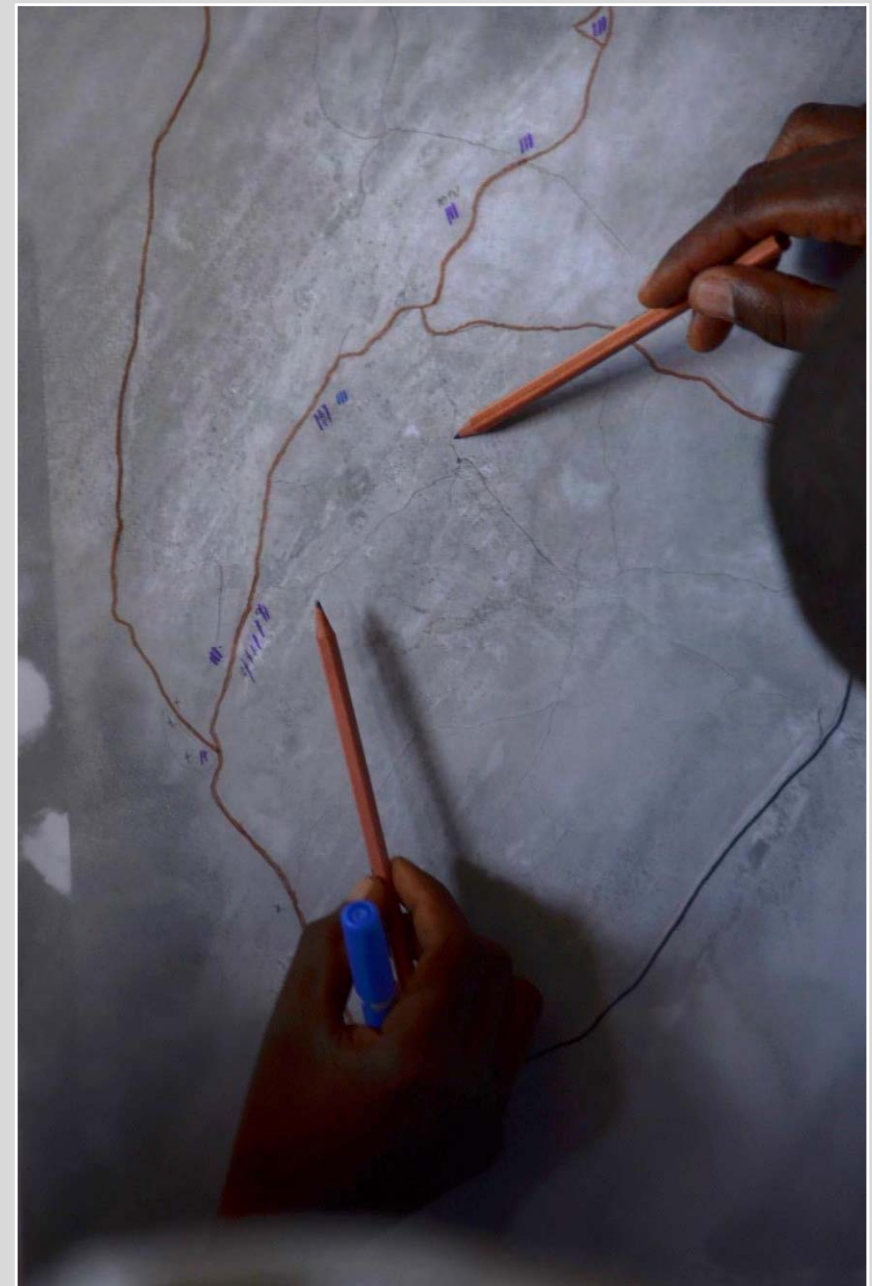
- To read an aerial photo, recognize the elements and the elements relations
- To identify the main critical/value elements in Mhlumeni
- To define the elements to be mapped with GPS

ACTORS

- n. 1 Lubombo Conservancy representative
- n. 1 COSPE representative
- n. n. 1 Mlawula Nature Reserve – SNTC representative
- n. 33 key-informants

MAIN OUTPUTS

- 33 Learned key-informants about map reading
- 2 drawn maps
- list of the main critical / value elements in Mhlumeni
- list of new elements to be mapped with GPS







TIME SCHEDULE

- May 22nd, Mhlumeni Care point

OBJECTIVES AND ACTIVITIES

- To understand and evaluate the main drivers of changes in Mhlumeni
- To test the first method of ecosystem services assessment

ACTORS (expected)

- n. 1 Lubombo Conservancy representative
- n. 1 COSPE representative
- n. 2 CESVI representatives
- n. 1 Mlawula Nature Reserve – SNTC representative
- n. 3 Dutch government representatives
- n. 33 key-informants

MAIN OUTPUTS (expected)

- Evaluation of the main drivers of changes in Mhlumeni
- 2 driver table
- 2 maps used to assess the Ecosystem services (I method)

TIME SCHEDULE

- June 2nd , Magadzavane lodge

OBJECTIVES AND ACTIVITIES

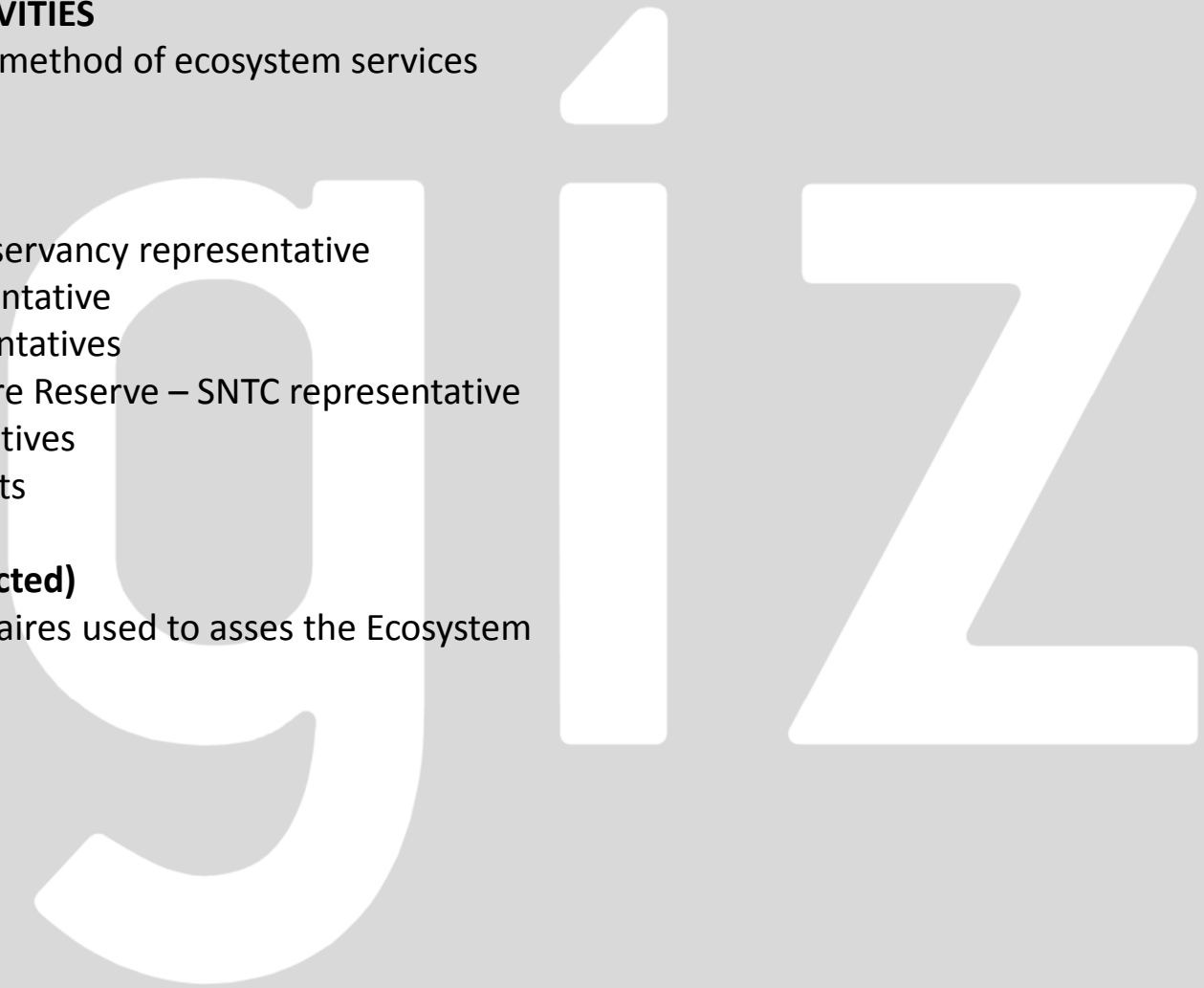
- To test the second method of ecosystem services assessment

ACTORS (expected)

- n. 1 Lubombo Conservancy representative
- n. 1 COSPE representative
- n. 2 CESVI representatives
- n. 1 Mlawula Nature Reserve – SNTC representative
- n. 3 GIZ representatives
- n. 33 key-informants

MAIN OUTPUTS (expected)

- 33 filled questionnaires used to assess the Ecosystem Services



TIME SCHEDULE

June 9-13

OBJECTIVES AND ACTIVITIES

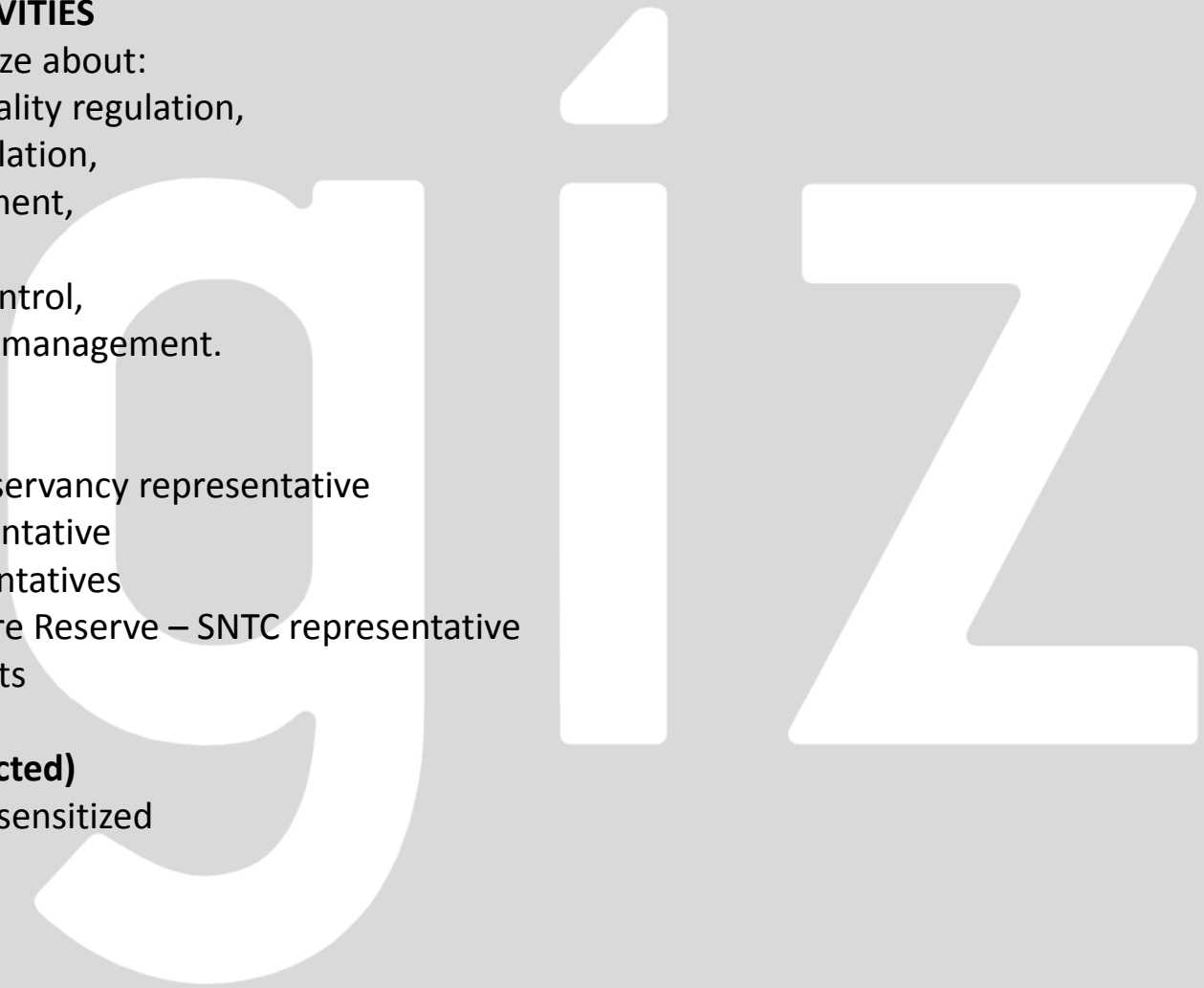
- To train and sensitize about:
 - about air quality regulation,
 - climate regulation,
 - waste treatment,
 - pollination,
 - biological control,
 - grazing land management.

ACTORS (expected)

- n. 1 Lubombo Conservancy representative
- n. 1 COSPE representative
- n. 2 CESVI representatives
- n. 1 Mlawula Nature Reserve – SNTC representative
- n. 33 key-informants

MAIN OUTPUTS (expected)

- 33 key-informants sensitized



TIME SCHEDULE

- At the end of June

OBJECTIVES AND ACTIVITIES

- To report back on the work carried out
- To share next steps

ACTORS

- n. 1 Lubombo Conservancy representative
- n. 1 COSPE representative
- n. 2 CESVI representatives
- n. 1 Lubombo Conservancy representative
- n. 1 TFCA representative
- n. 1 Mlawula Nature Reserve – SNTC representative
- community persons

MAIN OUTPUTS

- informed and sensitized community persons

giz

TIME SCHEDULE

- April - June

OBJECTIVES AND ACTIVITIES

- To organize and implement ArcGIS database
- To map selected critical / value elements in Mhlumeni
- To map existing trails used from community persons and tourism trails in the surrounded protected areas and in Goba
- To involve specialists (May 20th-22nd)

ACTORS

- Lubombo Conservancy,
- COSPE,
- Community guides
- CESVI staff
- specialists

MAIN OUTPUTS

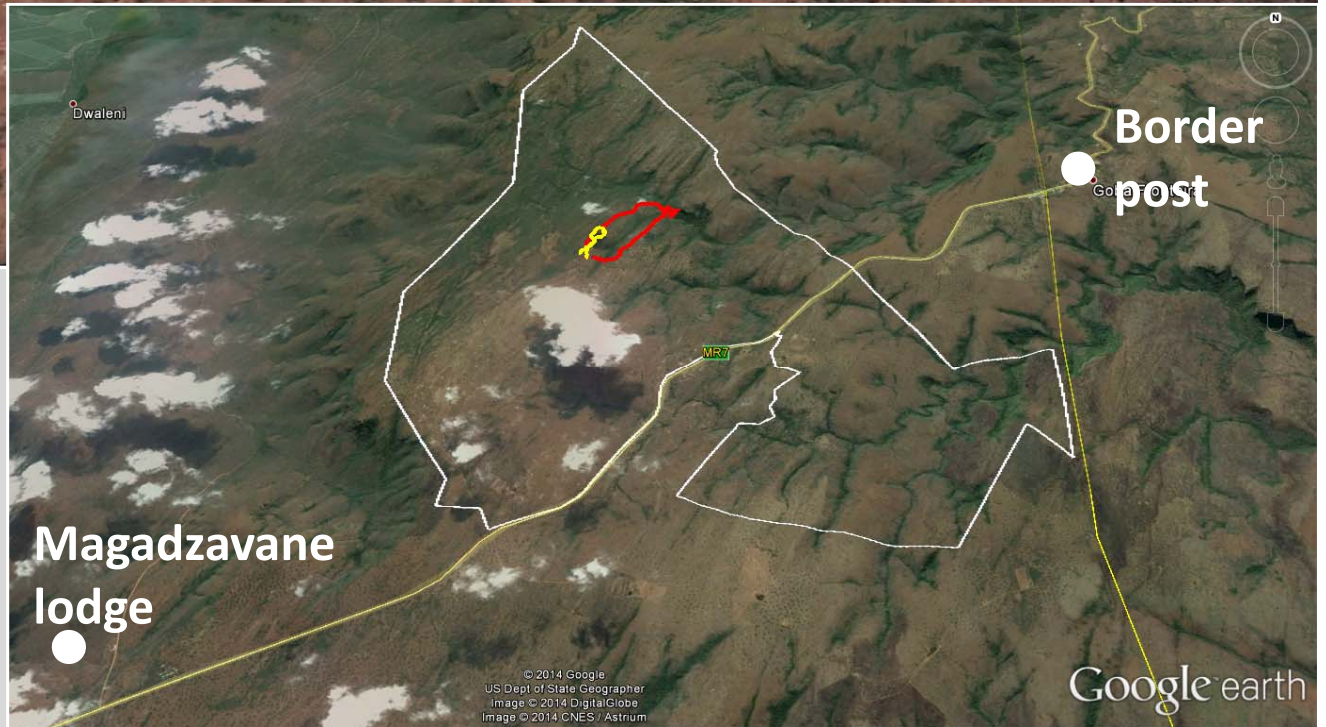
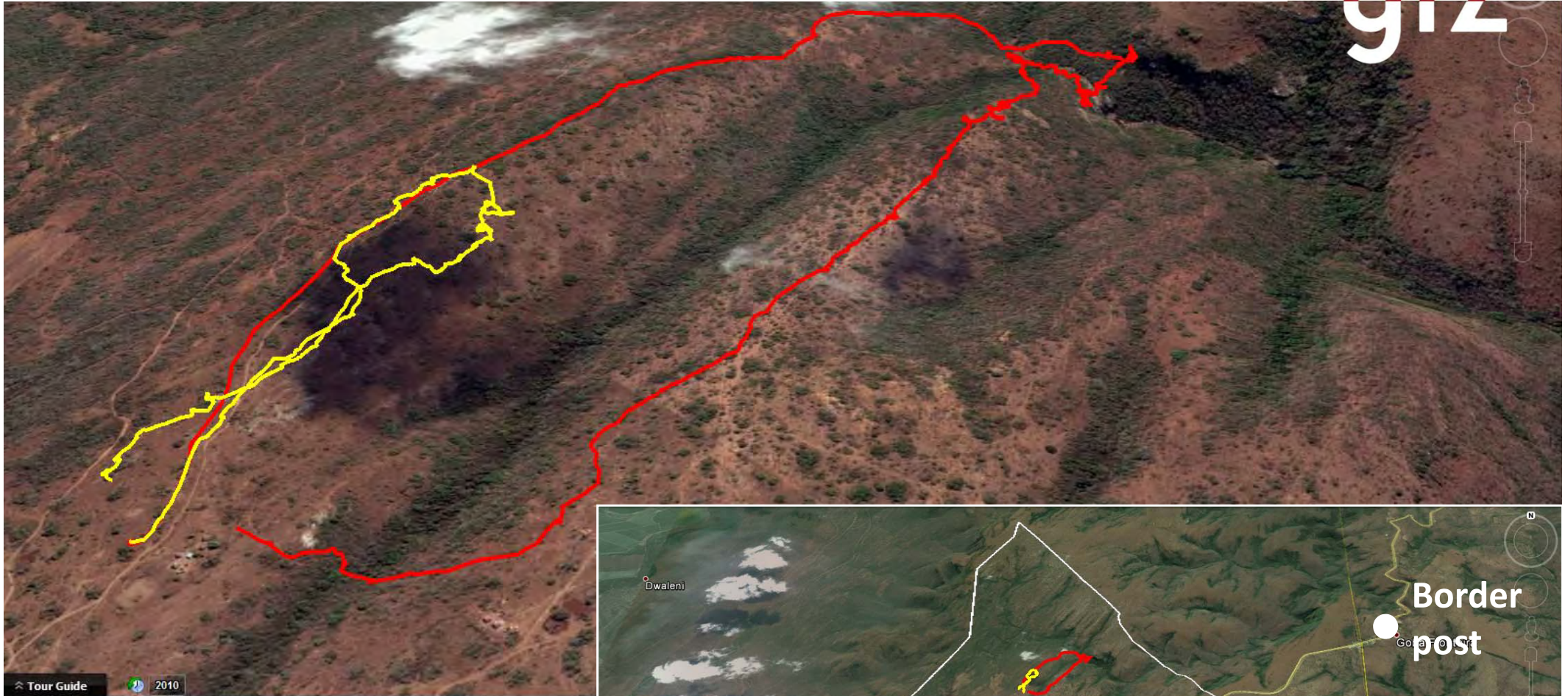
- Boundaries mapping on April 10th and 11th
- Grazing land mapping on April 23rd and 24th
- Water elements and sensitive areas mapping on April 30th
- (scheduled) vegetation mapping on May 20th – 22nd





D. BIODIVERSITY SURVEYS

giz

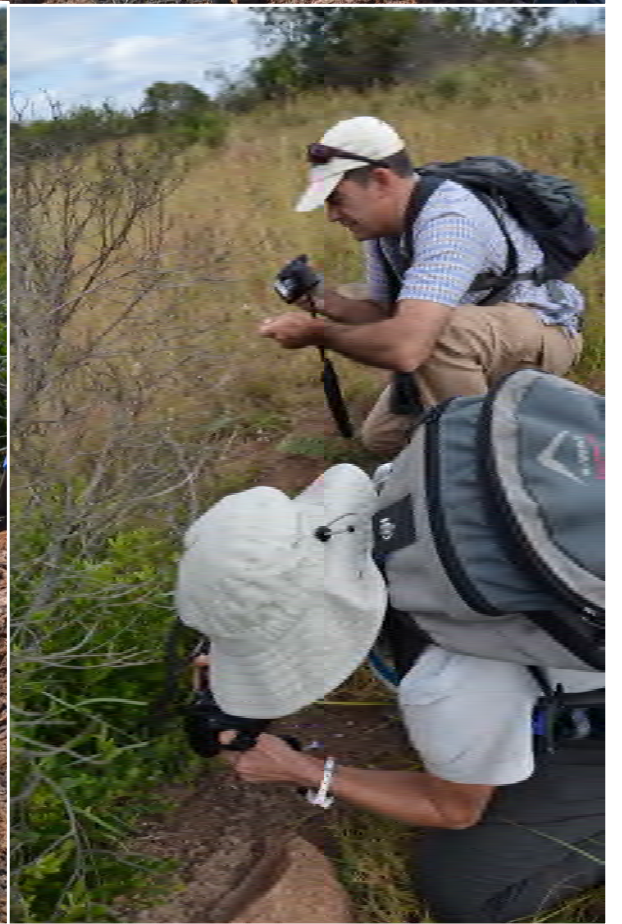


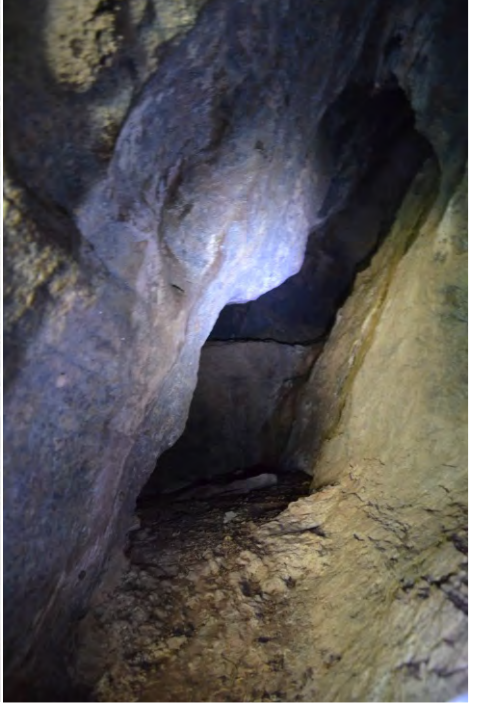
FIRST DAY (yellow line)

- Low open woodland
- Low closed woodland
- Thicket cluster

SECOND DAY (red line)

- Closed woodland
- Scarp and river Forest
- Bush
- thicket





1. PLANNING AND GOVERNANCE

2. DESIGN, CONSTRUCTION AND REHABILITATION OF LODGE INFRASTRUCTURE

3. TRAIL DEVELOPMENT

**4. TRAINING IN BASIC HOSPITALITY RELATED FIELD FOR ECOTOURISM, INCLUDING
GUIDING**

5. MARKETING AND PRODUCT DEVELOPMENT

6. INTERNATIONAL FACILITATION

7. PROJECT MANAGEMENT

MAIN PROJECT ACTIVITIES

giz

Q1: JANUARY – MARCH 2014

- Recruitment of consultant/site manager for camp designs

Q2: APRIL – JUNE 2014

- Preliminary camp designs

Q3: JULY – SEPTEMBER 2014

- Presentation of camp designs to community and other stakeholders
- Involvement of a builder
- Initial access and construction activities

Q4: OCTOBER – DECEMBER 2014

- Continue access and construction

TIME SCHEDULE

- January - June

OBJECTIVES AND ACTIVITIES

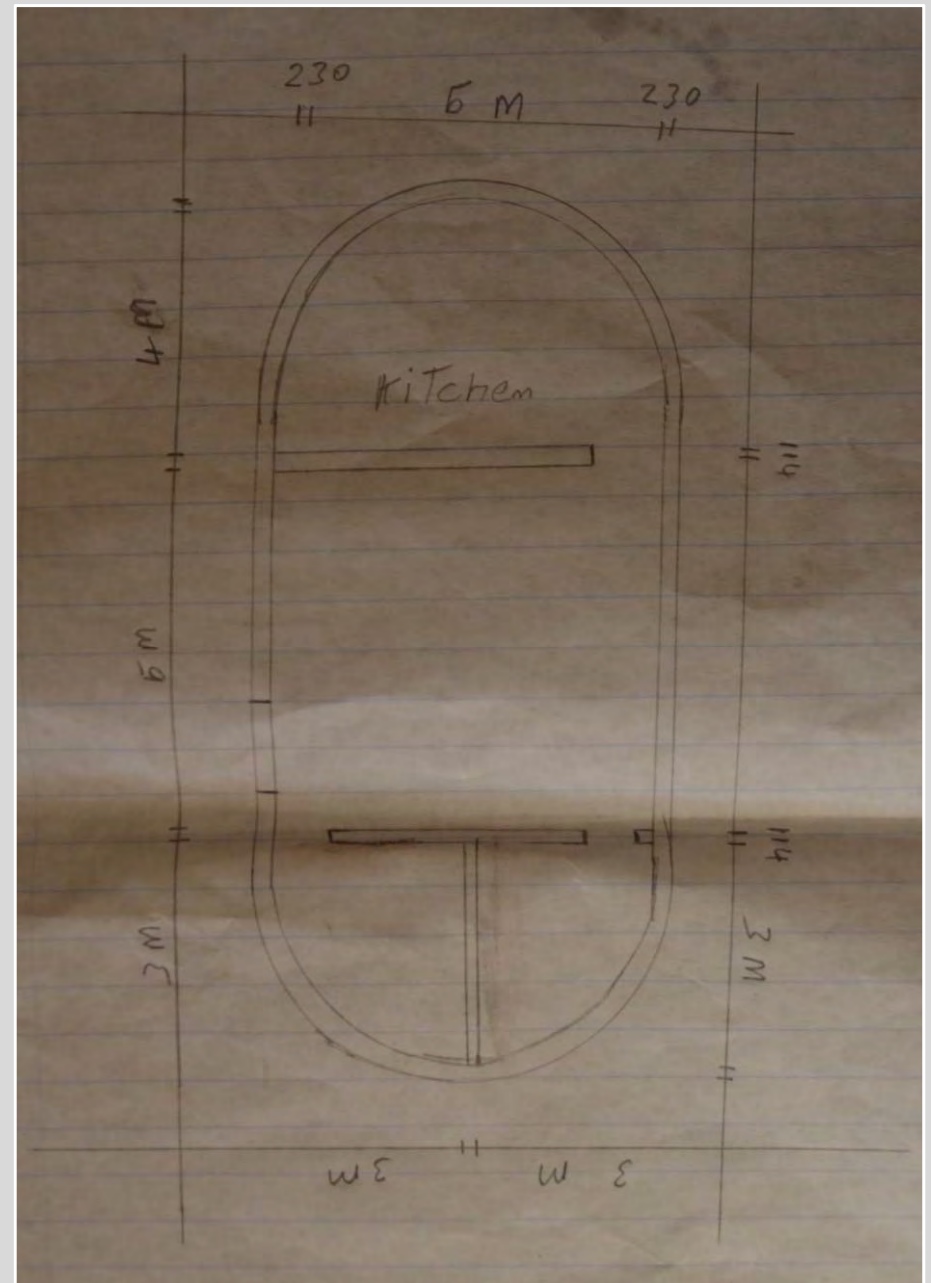
- Recruitment of consultant/site manager for camp designs
- Preliminary camp designs

ACTORS

- Lubombo Conservancy
- SNTC
- CESVI
- COSPE
- community representatives

MAIN OUTPUTS

- Reliable consultant
- Preliminary camp designs



Quotation of kitchen

Description of work

- 1 Set out the building and supervise the excavation of the foundation trenches
- 2 Build wall up to roof height
- 3 Roofing
- 4 Plastering inside, fitting windows and lay floor
- 5 Painting inside and doors fitting
- 6 Plumbing

Quotation of a (single) Toilet

Description of work

- 1 Set out the building and supervise the excavation of the foundation trenches
- 2 Build wall up to roof height
- 3 Roofing
- 4 Plastering inside and outside, fit windows and lay floor screed
- 5 Paint inside and doors fitting
- 6 Plumbing

Quotation of a Roundavel, diameter

Description of work

- 1 Set out the building and supervise the excavation of the foundation trenches
- 2 Build wall up to roof height
- 3 Roofing
- 4 Plastering inside, fit windows and lay floor screed.
- 5 Paint inside and doors fitting
- 6 Plumbing.

TIME SCHEDULE

- January - June

OBJECTIVES AND ACTIVITIES

- Presentation of camp designs to community and other stakeholders
- Initial access and construction activities

ACTORS

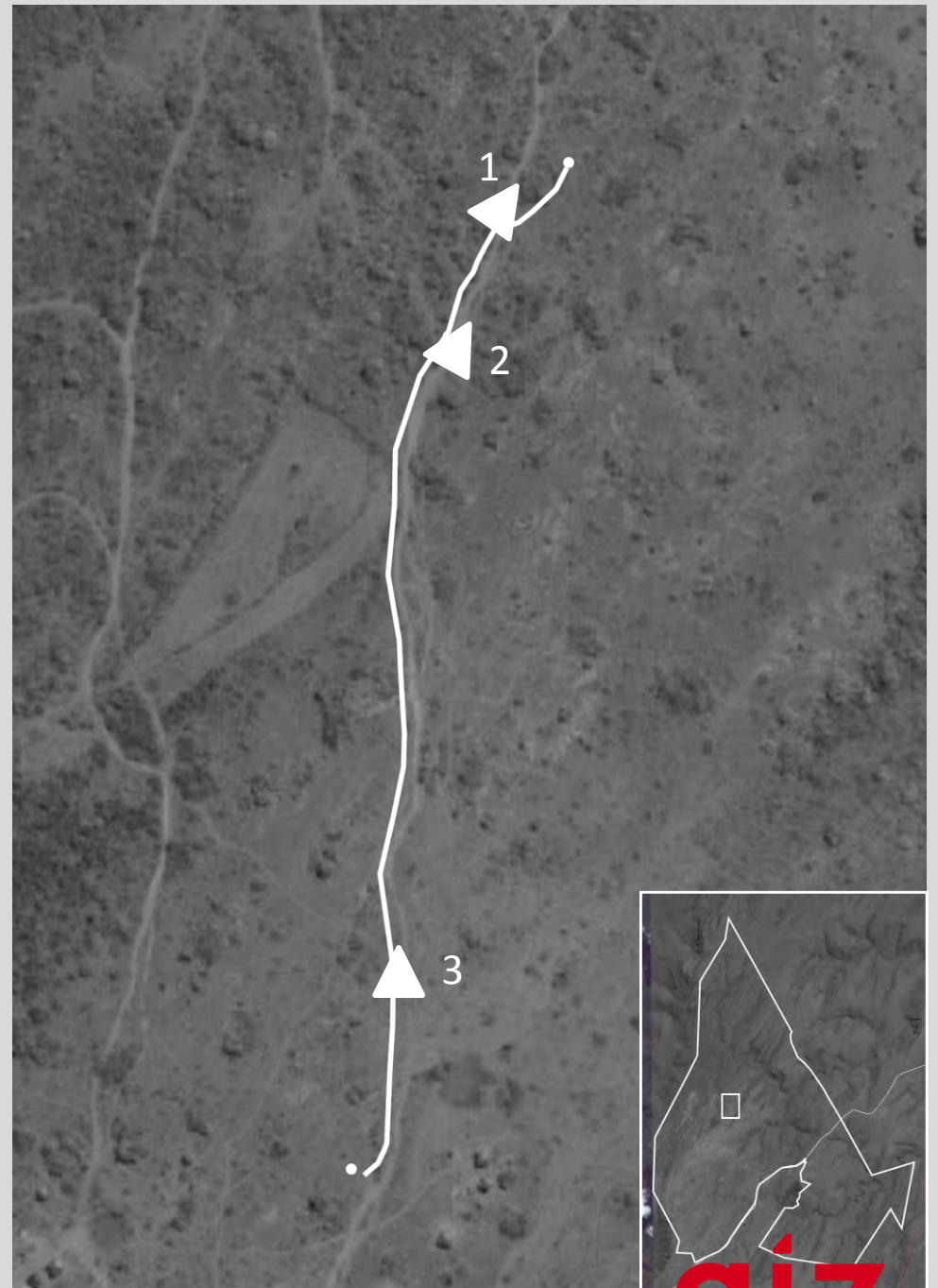
- n. 1 Lubombo Conservancy representative
- n. 1 COSPE representative
- n. 2 CESVI representatives
- n. 1 Lubombo Conservancy representative
- n. 1 TFCA representative
- n. 1 Mlawula Nature Reserve – SNTC representative
- community persons

MAIN OUTPUTS

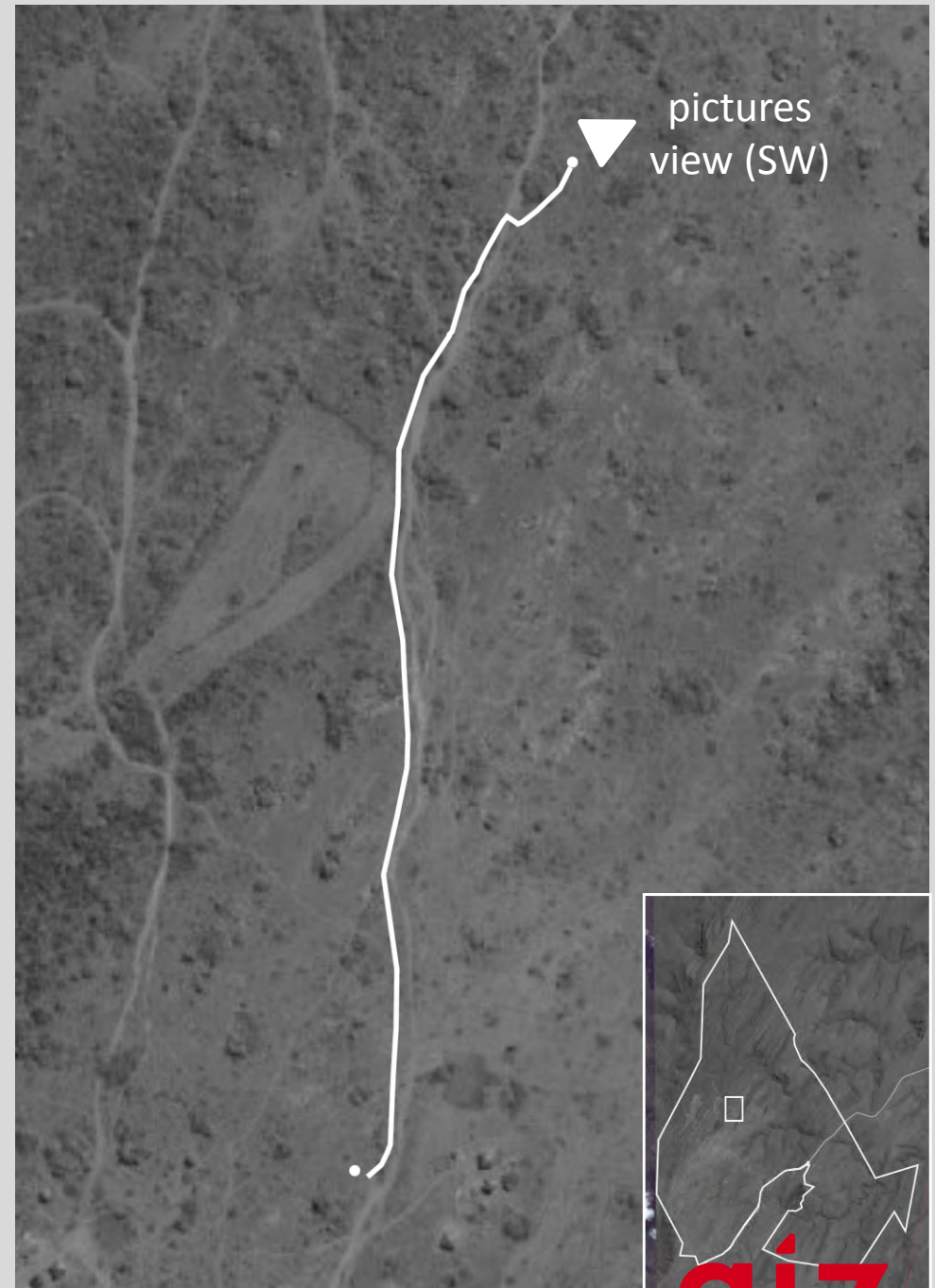
- informed and sensitized community persons



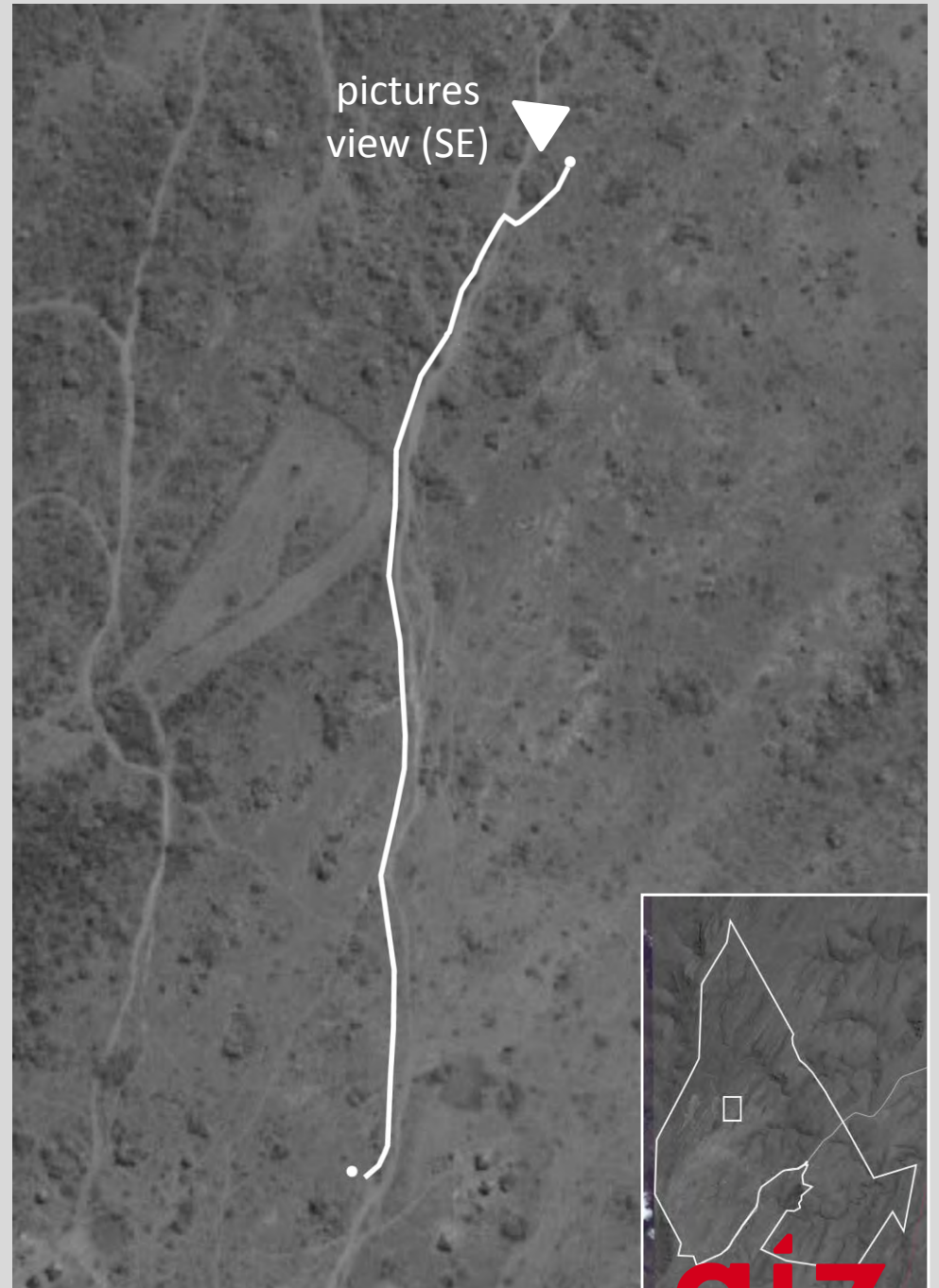




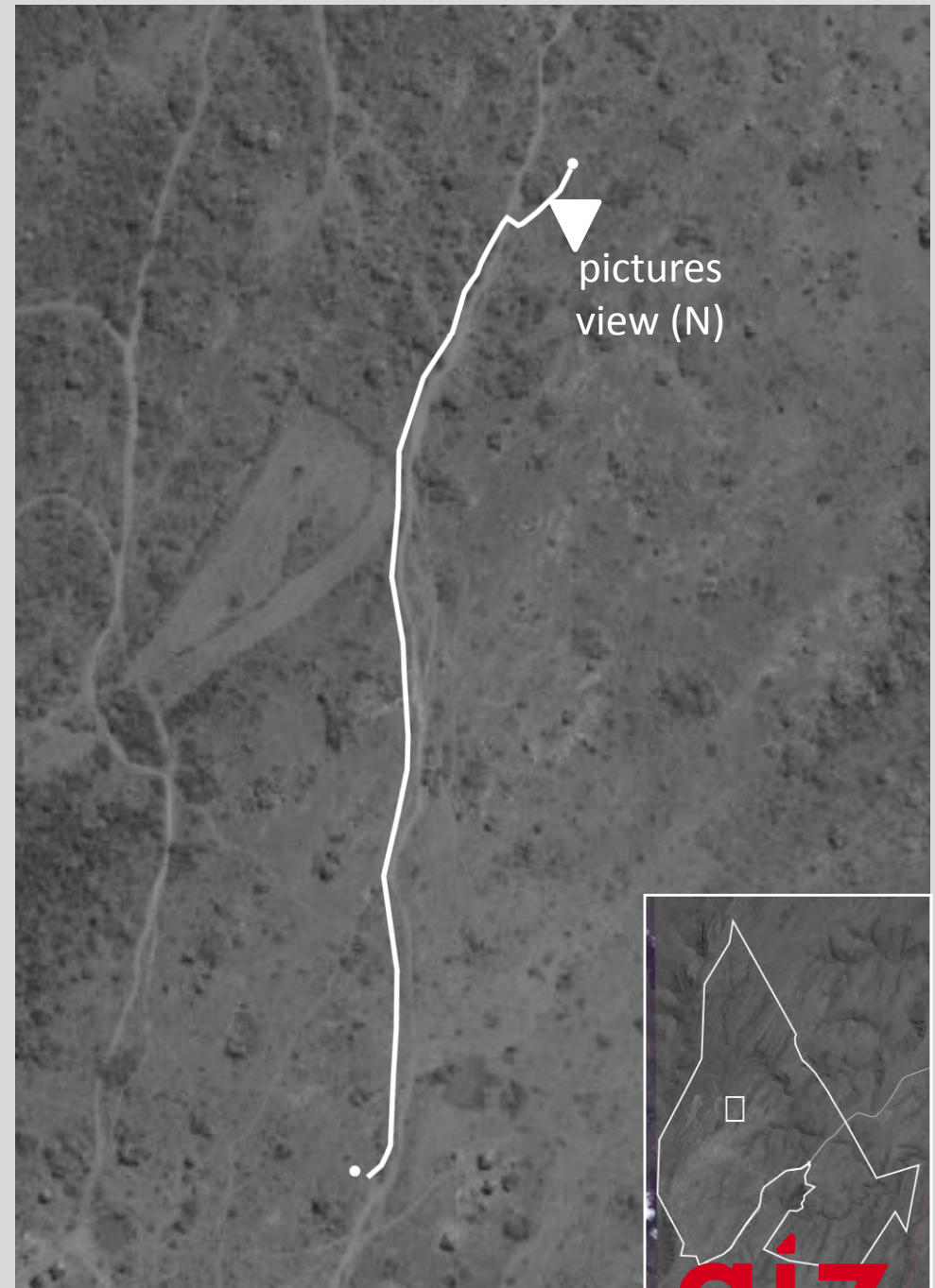
2. INFRASTRUCTURE INITIAL ACCESS AND CONSTRUCTION ACTIVITIES



2. INFRASTRUCTURE INITIAL ACCESS AND CONSTRUCTION ACTIVITIES



2. INFRASTRUCTURE INITIAL ACCESS AND CONSTRUCTION ACTIVITIES



2. INFRASTRUCTURE INITIAL ACCESS AND CONSTRUCTION ACTIVITIES



THANK YOU

