



GONAREZHOU CONSERVATION PROJECT

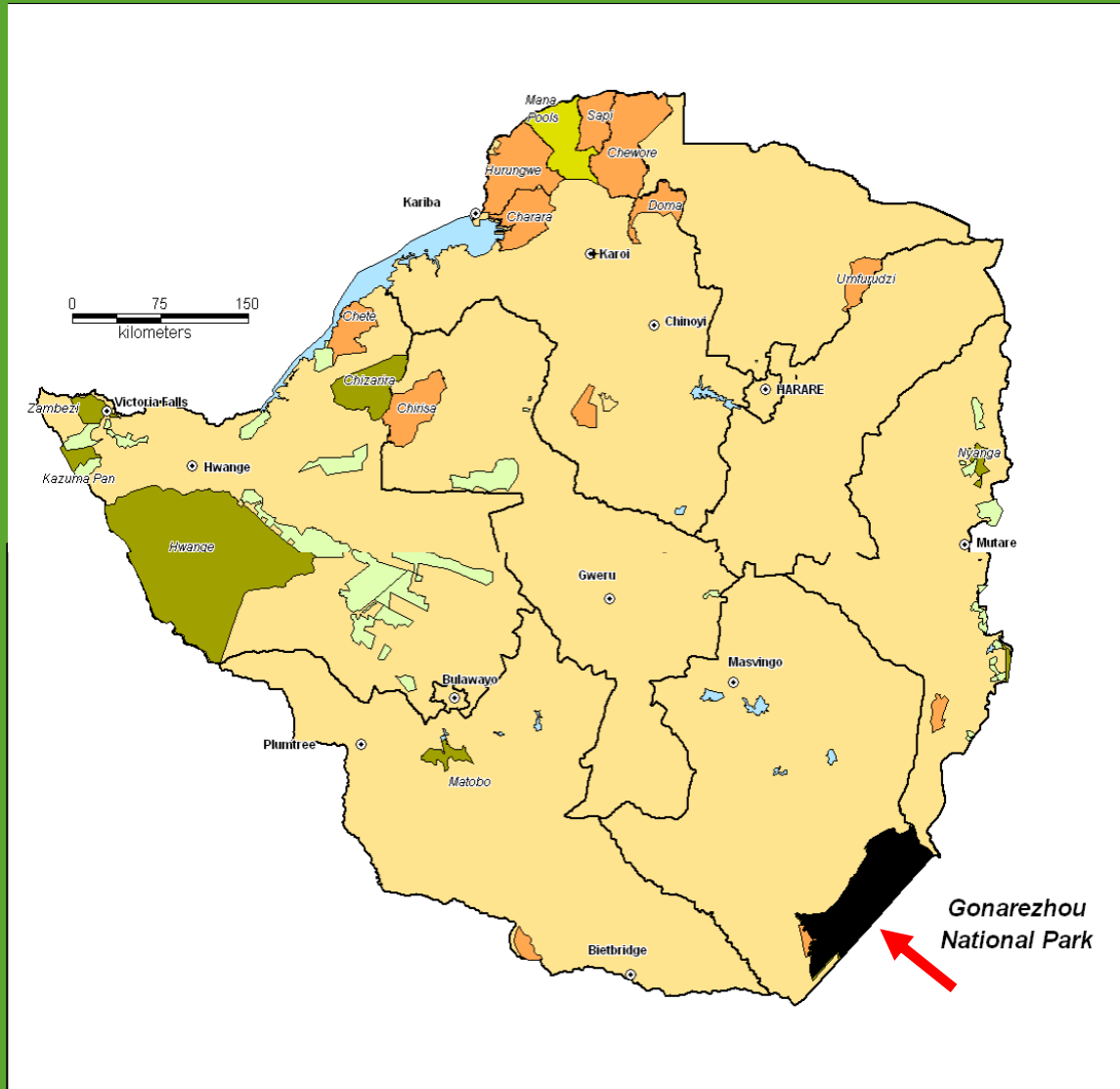




FRANKFURT
ZOOLOGICAL
SOCIETY
MEMBER'S HELP FOR TOMORROW'S WILDLIFE

Location:

- **Gonarezhou** - located in Zimbabwe's South East Lowveld
- Is the country's second largest National Park, and covers just more than 5 000 km²

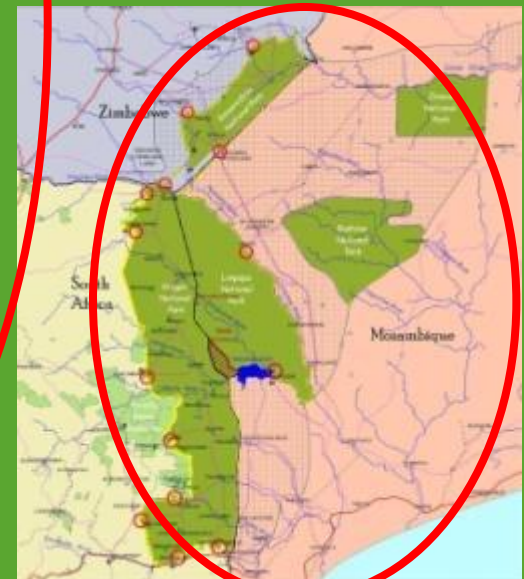




FRANKFURT
ZOOLOGICAL
SOCIETY

WILDLIFE'S GOLF FOR TOMORROW'S WILDLIFE

- Also forms part of the **Great Limpopo Transfrontier Park (GLTP)**, together with Kruger and Limpopo National Parks – covering more than 30 000 km²
- The **Greater Limpopo Transfrontier Conservation Area (GLTFCA)**, incorporating a mosaic of land use types with wildlife conservation as a unifying theme, covers more than 100 000 km²





Gonarezhou Conservation Project



Type of support:

Financial and technical. FZS has an on-site presence.



Gonarezhou Conservation Project



Key activities:

Comprehensive Park Management Support

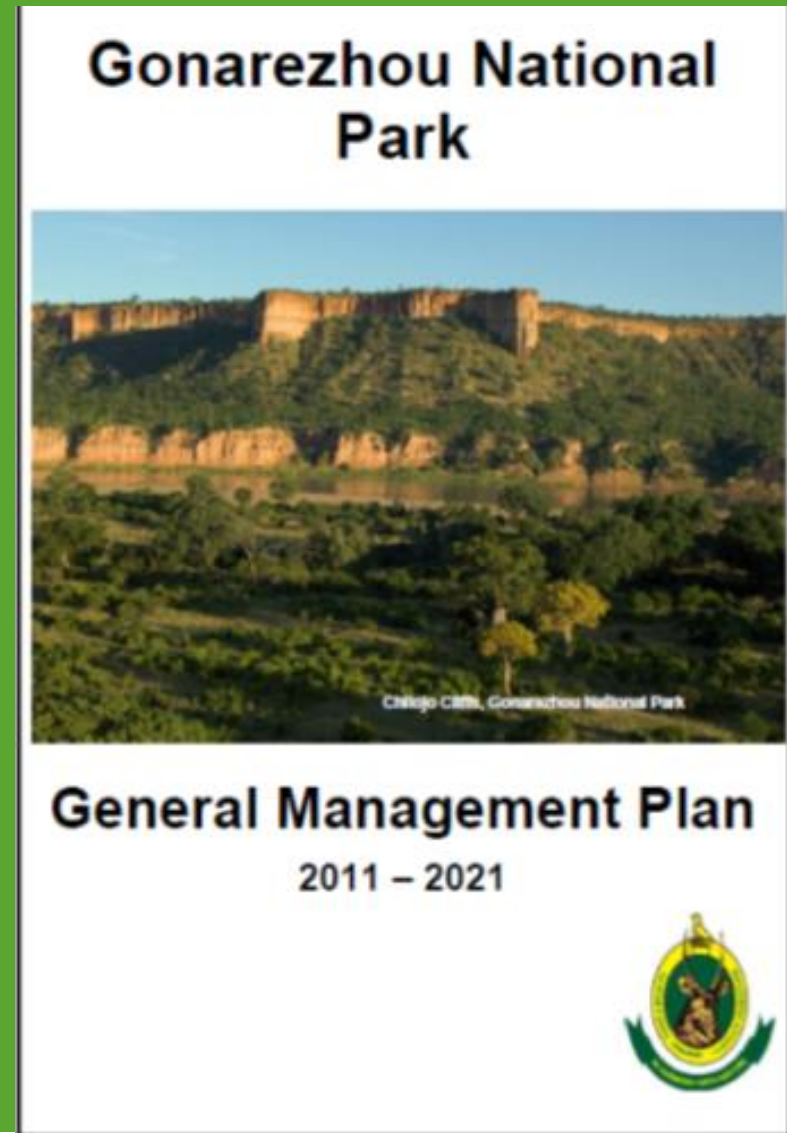


Gonarezhou Conservation Project



Key activities:

- Park Planning – 10 year plan ratified by Minister
- Provide roadmap for partnership but some limitations





Gonarezhou Conservation Project



Key activities:

- Management and monitoring systems
- Ranger training and equipment
- Recurrent management costs - rations, fuel





Gonarezhou Conservation Project



Key activities:

- Aerial surveillance and ranger support
- Canine Unit





Gonarezhou Conservation Project



Key activities:

- Vehicles, and vehicle and equipment maintenance
- Infrastructure development and maintenance (roads, staff housing, fences)



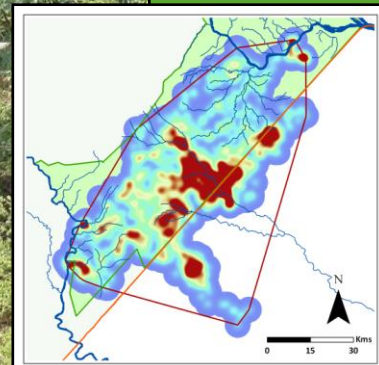
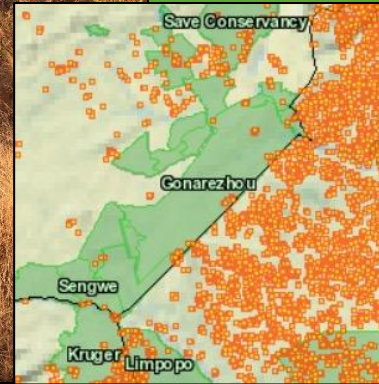


Gonarezhou Conservation Project



Key activities:

- Fire management and monitoring
- Ecosystem monitoring
- bi-annual aerial surveys, elephant movements, vegetation mapping



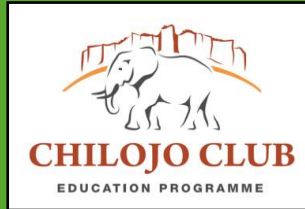


Gonarezhou Conservation Project



Key activities:

- Community liaison, collaborative projects and conservation education/literacy
- Engagement on ecosystem level with adjoining stakeholders (communities, hunting industry, NGO's)





Gonarezhou Conservation Project



How FZS became involved:

- Historical support in the 1980's
- Challenging economic and political situation created a need
- Gonarezhou was a good fit for the FZS portfolio
- Direct one-to-one discussions between FZS Africa Director and ZPWMA Director led to Agreement



Gonarezhou Conservation Project



Governance arrangements:

- Initially Agreement between FZS and PWMA in 2007 and later signed with Ministry in 2010
- 10 year duration
- ZPWMA Area Managers direct counterparts to FZS project leader
- No formal community representation
- Process for resolving disputes: dialogue between the partners



Gonarezhou Conservation Project



ZOOLOGISCHE
GESELLSCHAFT
FRANKFURT
GRZIMKE HILFT FÜR DIE BEBOHRTE TIERWELT

Roles and responsibilities:

- ZPWMA with overall mandate provides manpower and staff salaries
- FZS provides financial and technical support for all aspects of Park Management activities

but:



Gonarezhou Conservation Project



ZOOLOGISCHE
GESELLSCHAFT
FRANKFURT
GEZIMMELTE HILFE FÜR DIE BEDRÖHTEN TIERWELT

Roles and responsibilities:

- Manpower challenges
 - FZS now pays for 68 rangers who are on PWMA contracts
- Tourism development – partnership is limited what it can do





Gonarezhou Conservation Project



Financial management:

- FZS manages donor income and grant agreements
- ZPMWA manages revenue generated by tourism activities



Gonarezhou Conservation Project



ZOOLOGISCHE
GESELLSCHAFT
FRANKFURT
GRZINNEKE HILFE FÜR DIE BEDROHTE TIERWELT

Benefits and expectations:

- Articulate benefits to the parties : *partners achieving their respective conservation objectives*
- What steps are taken to involve communities : *Employment and education with possibilities of tourism*
- Mechanisms to manage expectation – *ongoing dialogue, monthly meetings and annual budget discussions between partners*



Gonarezhou Conservation Project



Effectiveness & lessons learned

How effective is the partnership? *Very, but some limitations and challenges*

What is working well and why? *Better managed Park. Ongoing trust and communications*

What are the major challenges? *Manpower shortage and lack of tourism development*

What are the lessons learned? *Success depends on individual relations*

What would you do differently? *Common objective more clearly outlined from the onset to the individuals on the ground*



Gonarezhou Conservation Project



ZOOLOGISCHE
GESELLSCHAFT
FRANKFURT
GRZIMKE HILFE FÜR DIE BEDROHTE TIERWELT

Way Forward

After 2 years of discussions and strong relationship between the partners a Trust is in the process to be established . Objectives of the Trust :

- 1) Security – to allow for rhino introduction and secure elephant population
- 2) Tourism development – Diversified products build on Park's wilderness qualities and also provides security and community benefits
- 3) Community relations further enhanced