

**/AI/AIS-RICHTERSVELD
TRANSFRONTIER PARK
Case study Community owned Park**



1:750 000

Map prepared by:

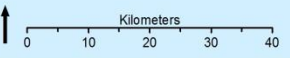
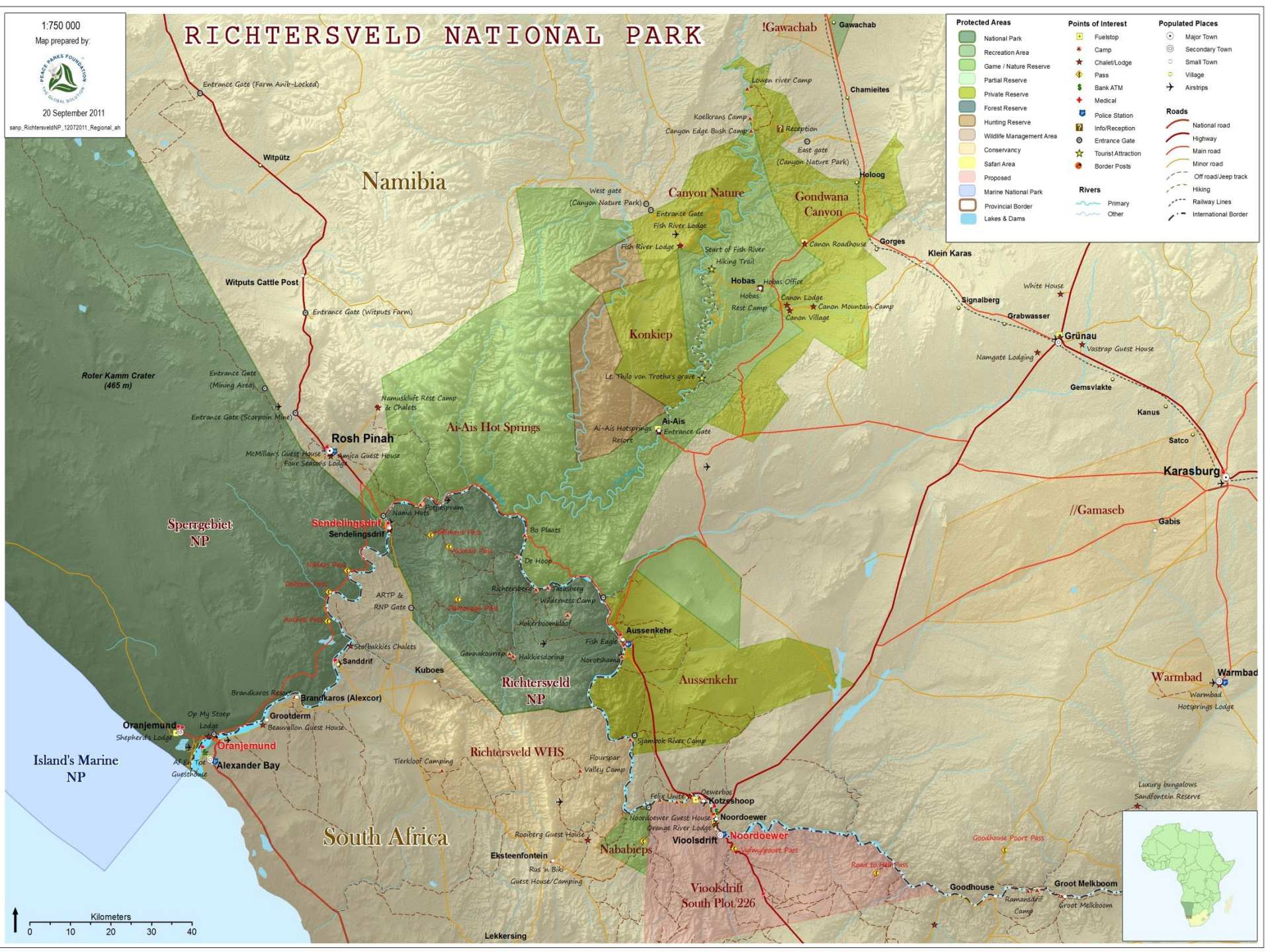


20 September 2011

nanp_RichtersveldNP_12072011_Regional_ah

RICHTERSVELD NATIONAL PARK

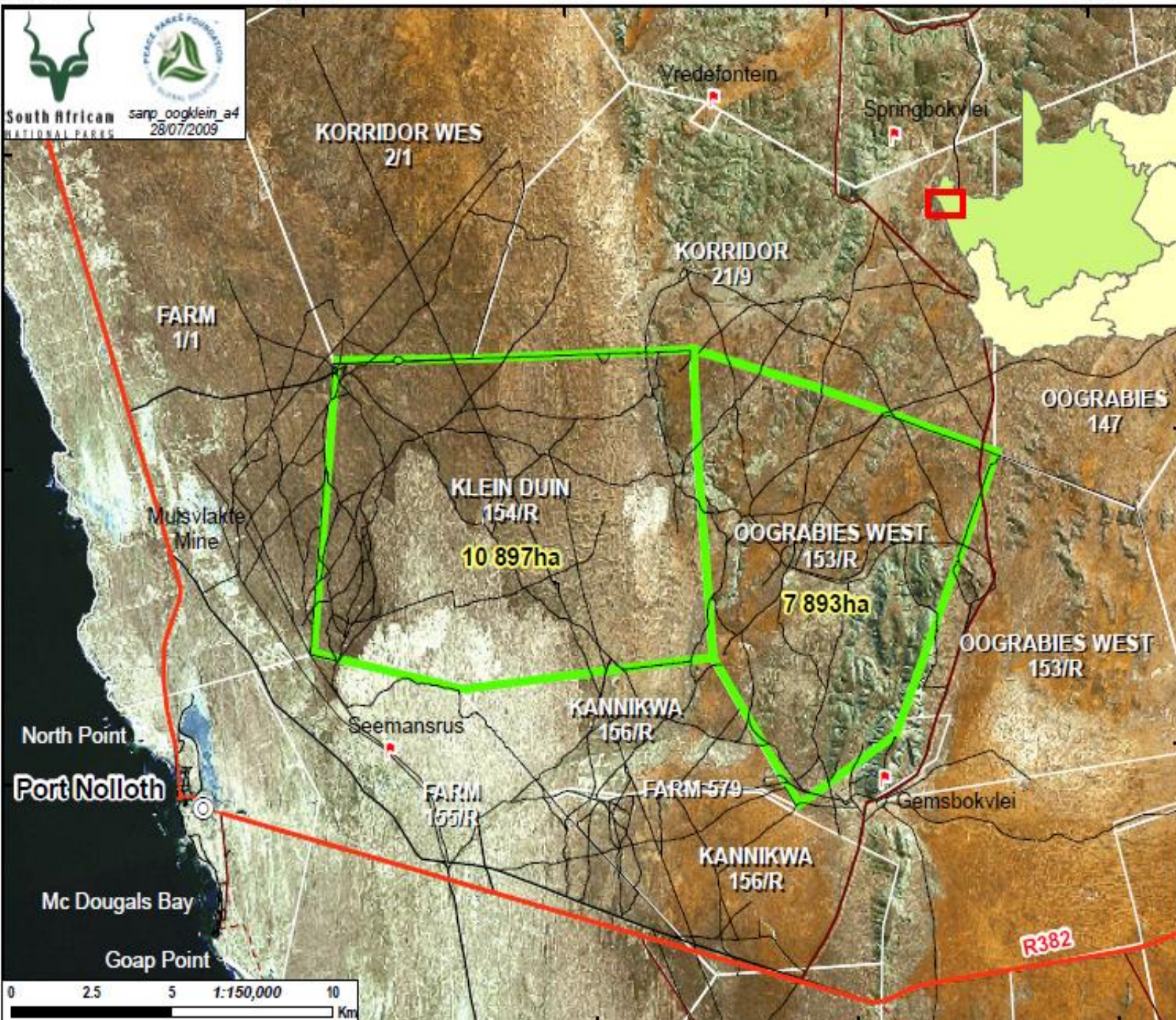
| Protected Areas | Points of Interest | Populated Places |
|--------------------------|----------------------|------------------|
| National Park | Fuelstop | Major Town |
| Recreation Area | Camp | Secondary Town |
| Game / Nature Reserve | Chalet/Lodge | Small Town |
| Partial Reserve | Pass | Village |
| Private Reserve | Bank ATM | Airstrips |
| Forest Reserve | Medical | |
| Hunting Reserve | Police Station | |
| Wildlife Management Area | Info/Reception | |
| Conservancy | Entrance Gate | |
| Safari Area | Tourist Attraction | |
| Proposed | Border Posts | |
| Marine National Park | Rivers | |
| Provincial Border | Primary | |
| Lakes & Dams | Other | |
| | National road | |
| | Highway | |
| | Main road | |
| | Minor road | |
| | Off road/Jeep track | |
| | Hiking | |
| | Railway Lines | |
| | International Border | |



16°50'0"E 16°55'0"E 17°0'0"E 17°5'0"E 17°10'0"E

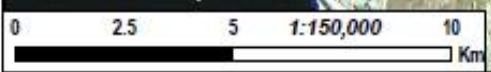


29°30'S
29°10'S
28°50'S
28°15'S



Kleininduin/ Oograbies Wes

- ⊙ Towns
- ▣ Farmsteads
- National road
- Main road
- Minor road
- Other road
- Street
- - - Off road track
- ▭ Oograbies-wes /Kleininduin
- ▭ Farm portions



Background

- RNP is one of 21 National Parks.
- Contractual Park between SANParks and the Richtersveld community.
- RNP agreement was signed on 20 July 1991.
- RNP proclaimed on 16 August 1991.
- Treaty signed 1 August 2003 (99year)
- Managed by RGBK (Richtersveld Joint Management Committee)
- 162445 ha in extent
- Kleinduין en Oograbies Wes farms near Port Nolloth. (+- 18 000ha)
- World Heritage Site (adjacent)



Vision of RNP

“To maintain a world class, sustainable contractual park, whereby the aesthetic landscape, biodiversity and self-identified cultural practises from the local people are protected and respected and where mining is allowed within the realm of best environmental practises”



**South African
NATIONAL PARKS**

Conditions of agreement

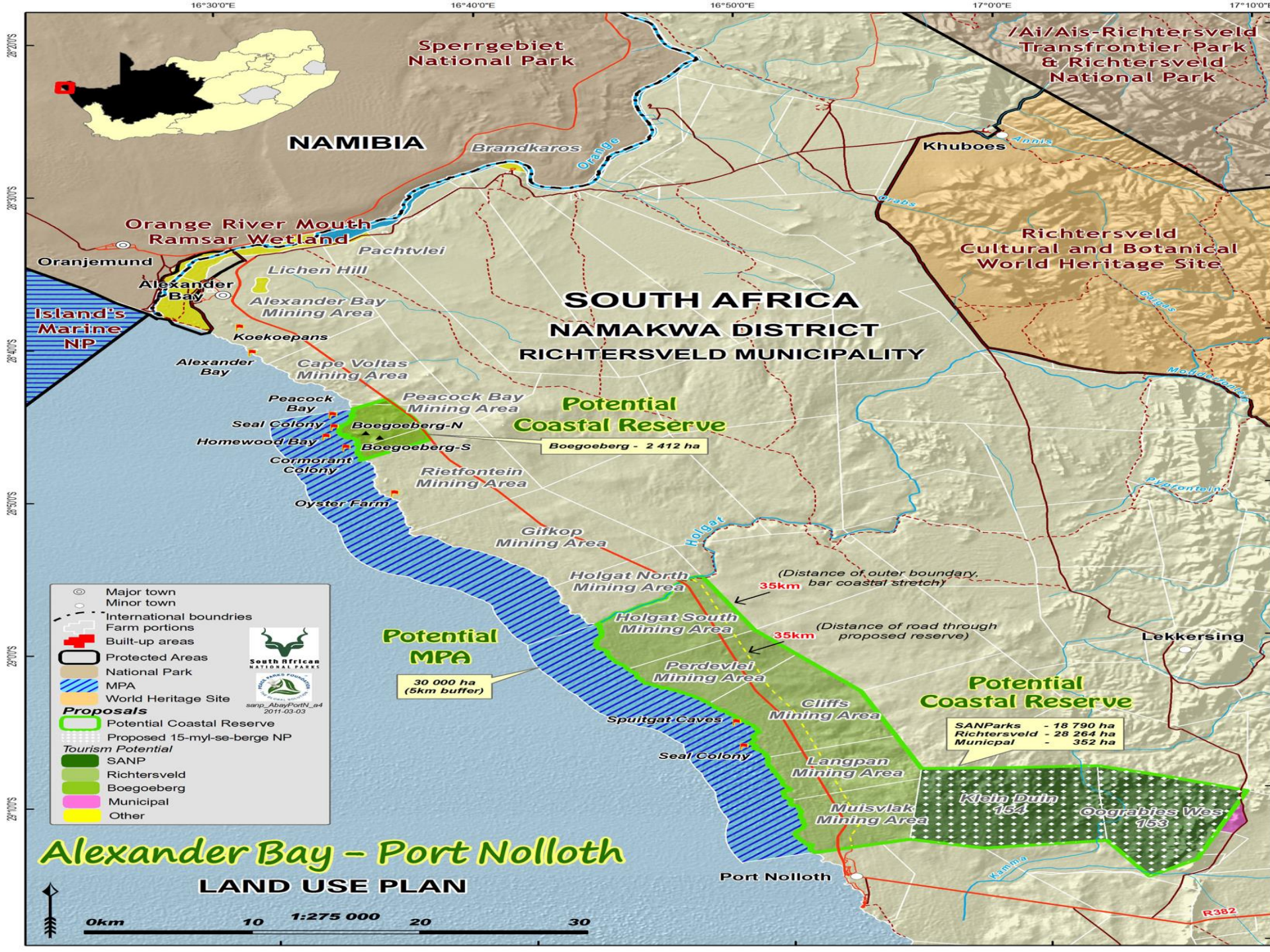
- On a 30 year lease give or take 6 years
- RGBK consists of 5 community members (elected by IEC) and 5 SANParks officials
- SANParks pay an annual “rent” to the Trust (R0,50c/ha going up to R 7.00/ha)
- Livestock farmers allowed to graze within the park (6600 small stock units)
- SANParks employ only people from community - exceptions
- Quarterly meetings with RGBK
- Establishment of Nursery
- Mining to continue as per EIA



Expansion possibilities

- Kleinduין and Oograbies Wes farms
- Corridor Wes Farms
- Inclusion of Coastal section between Port Nolloth and the Holgat river, as well as Boegoeberg
- Contractual between SANParks and Richtersveld CPA
- High in biodiversity (endemic plants, seal colonies, cormorant colonies), cultural (strandloper people) and archeological (desert roses, fossils etc).
- Huge tourism potensial





Roles and Responsibilities

- SANParks is the management authority guided by the Park Management Plan.
- Day to day operations managed by SANParks guided by RGBK.
- Funded by SANParks
- All staff to come from community as per agreement – are exceptions
- All development as per management plan (every 10 years review)
- People and Parks officer direct interaction with community



South African
NATIONAL PARKS

Governance

- Signed Park agreement (currently under review)
- NEMA, NEMPAA,
- National Parks Act (Act no. 57 van 1976)
- Finance – PFMA
- Staff – Employment equity Act, Labour relations Act, OHS Act etc.



South African
NATIONAL PARKS

Benefits

- RNP is owned by the Richtersveld community and managed by SANParks and the community through the RGBK
- SANParks pay annual rent into the community trust which is then utilised by the community for projects.
- RNP employs 31 permanent community members, 4 pontoon operators, 4 Environmental monitors and 3 temporary staff
- The BSP projects employs 7 contractors with 13 employees per contract as well as an Admin officer. Projects have increased over the years from one to seven.

Benefits - Continue

- Through the Transfrontier conservation initiatives SANParks have managed to link the Nama community on both sides of the border.
- Communities participate on the annual events such as Desert Knights MTB Tour and the Richtersveld Transfrontier Wildrun
- Through funding received from GiZ the ARTP started the Desert Kayak trails which is run by the communities and they all were trained as river guides. Idea for them to take over – multi million Rand industry
- Due to the increase in tourism numbers to the area the tourism products in the community area has also benefited the community.

Effectiveness

- Has worked well for the past 25 years – initially was a rocky road before trust developed between parties.
- Benefits both parties
- Currently the park not profitable due to various reasons. Will change in future.
- Expansion due to good working relationship
- Transparent and open communication.
- Mining and stock farming in contradiction with biodiversity but is managed and working
- Ensure objectivity at all times – IEC as example





THANK YOU



South African
NATIONAL PARKS